



MACH2
BY KORS ENGINEERING

PLC Integration & Plant Floor Automation



We Speak Machine. You Can Too.

Mach2 is an integration software platform that interacts with your shop floor machines and systems to provide real-time usable, actionable information. Mach2 is a browser-based system with production dashboard and scoreboards that can be customized to your unique business needs. With Mach2, machine activity can also be automatically synced with PLEX for seamless operations throughout your business.

Control: Data Entry into PLEX

With Mach2, data entry is automated; unleashing operators from tedious data entry while improving accuracy. Mach2 captures data (24x7x365) that your current manufacturing process can't access.

- PLCs, Scales & Gauges, Legacy Equipment, Barcode Printers, Barcode Scanners, Plant Systems, ERP/MES Systems
- Production Cycles, Part Variances, Downtime, Scrap, Inventory and Machine Status

Control: Shop Floor Execution

Mach2 enables your operators to focus on producing products. Mach2 can automate your machine setups by calling information housed in PLEX and generate lineside labeling.

- Automate everything: transactions, monitoring and error proofing.
- Real-Time Production Scoreboards: Easily customized production dashboards present real-time machine data in easy-to-read results to employees on the shop floor.

Control: Your Future Through Unlimited Expansion of Mach2

Mach2 is a tool-set that enables unlimited possibilities. After a 2-day training class, Kors will "hand over the keys" allowing you to make any enhancements you desire – NO CODING REQUIRED.

- Open architecture preserves legacy investments and evolves to incorporate next generation technology.
- Single-server licensing model means no per user or per machine licensing fees.

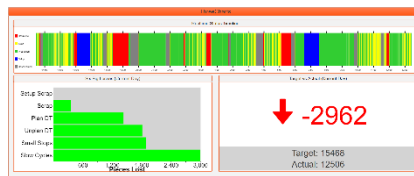
Mach2: Day One Experience

Implementation is quick and easy! The below are standard items that are included and delivered on the very first day.

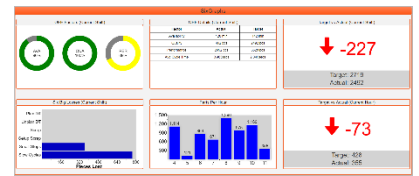
Operator Workcenter View



The operator graphical view is intended to be a workcenter operator's main view into PLEX. This view provides as much information as possible about the status of the workcenter and production recording. The operators can view current counts, job statuses and information/attributes about their job/part. This screen also includes an at-a-glance view of the last 24-hour performance via the color-coded Gantt chart.



Many layout options available



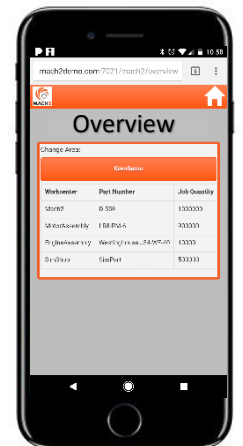
OEE Production Scoreboard

Mach2 includes OEE Production Scoreboards that display performance information on each workcenter (Target vs. Actual, Cycle Time, Uptime, etc.) This view provides details and/or trends of the performance data being collected and/or calculated. Multiple content boxes break down performance information in different ways to expose areas to target downtime, availability and performance.



Area Information View

Mach2 Standard Area Information View provides an overview of your plant floor based on areas. Each workcenter is assigned an area during setup. There are various details provided about the job and part, production information, along with performance information and some simple color coding to indicate workcenter status.



Whiteboard View

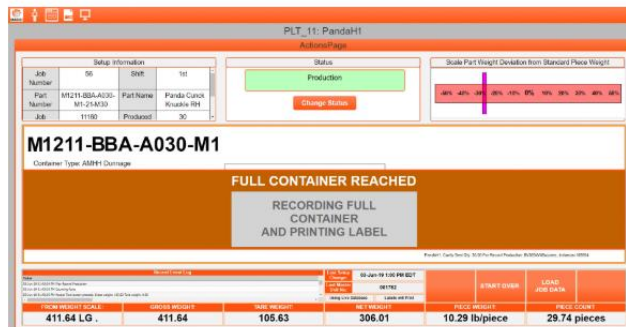
Many manufacturing plants leverage antiquated dry-erase whiteboards that are updated manually, taking operators away from value-add work. Mach2's Whiteboard View synchronizes with your plant floor and PLEX to provide real time views on your plant floor, easily replacing old practices of handwriting on whiteboards.



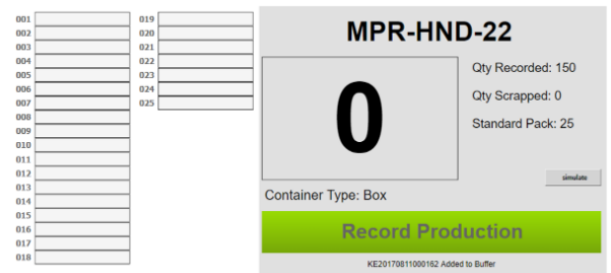
Mach2: It's So Much More Than PLC Integration!

- ✓ SCADA
- ✓ Automated Workcenter Setup
- ✓ Automated Record Production*
- ✓ Workcenter Enforcement
- ✓ Weigh Scale Integration
- ✓ Small Lots Packout
- ✓ Checksheet Integration
- ✓ Operator Clock-In
- ✓ Source Material Scan
- ✓ Scoreboards*
- ✓ Verified Tooling
- ✓ Database Integration
- ✓ Lineside Labeling
 - Individualized Piece Labels
 - Piece Serialized Labels
 - Container Labels
- ✓ Quality/Traceability
- ✓ OEM Requirements (Honda MPR)
- ✓ Master Unit Builds
- ✓ Automated Guided Vehicle integration
- ✓ Part/Packout/Process/station/workflow validation
- ✓ Batch management/depletion
- ✓ Image management
- ✓ Serialized Pieces with Verified Packing to Standard Shipping Quantities
- ✓ A “no programming” platform for customization and unlimited possibilities...!

Weigh Scale Integration



Piece Serialization Screen



Choose Experience

The engineering team behind Mach2 is fluent in the language of machines, with more than 275 years of collective experience. Today, Mach2 is at work in over 200 plants around the world, managing more than a million transactions daily and billions of transactions to date.

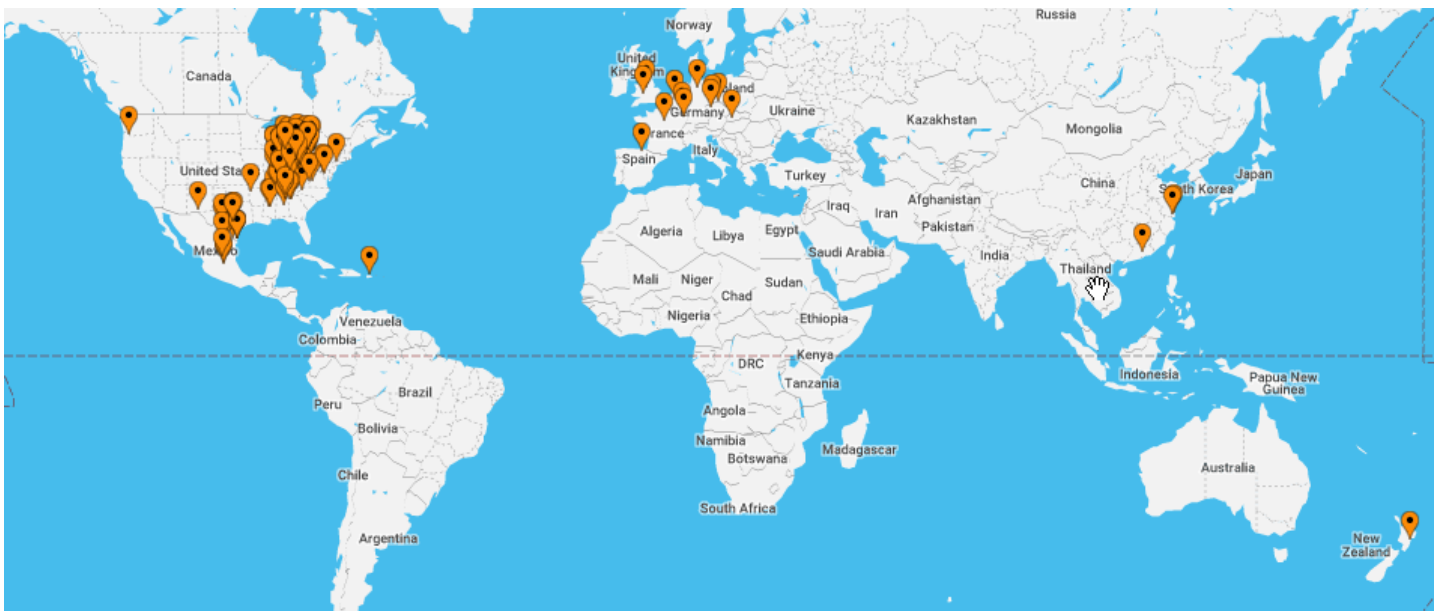
**200+ Plants
Around the Globe**



**4,000+ Integrated
Machines**



**Billions of
Transactions to Date**



Contact Us

Mach2 is a cost-effective solution that speeds manufacturing improvements by putting real-time data at manager's and employee's fingertips. Contact us to schedule a free demo or to learn more.



Kors Engineering
2805 Pontiac Lake Road, Suite 2B
Waterford, MI 48328
P: (248) 706-1540
Sales@KorsEngineering.com
www.WeSpeakMachine.com

